

# ModBus Dashboard

## Dashboard for Particles Plus Instruments



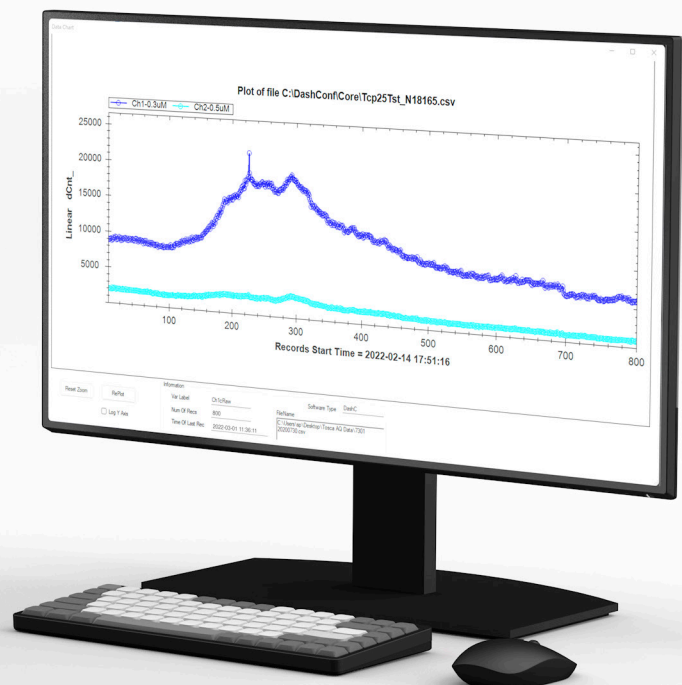
Particles Plus® ModBus Dashboard software is provided free of charge for use with Particles Plus particle counters. It is intended to provide a simple means of monitoring and logging data from one or more of these particle counters via the Modbus protocol.

The ModBus Dashboard uses a tabbed interface design in order to maximize productivity. The tabs are modeled after meticulous research in order to make the end-user experience as optimal as possible, providing an easy to configure and setup interface. Users can monitor and manage up to 35 instruments.

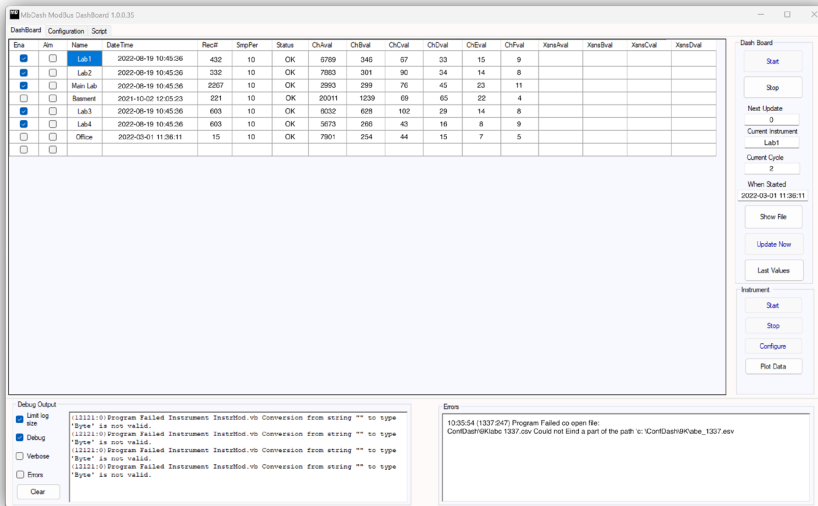
Instruments can be connected using the existing network over TCP/IP, RS-232, or RS-485 interfaces.

### Features and Benefits

- Intuitive user interface
- Real-time measurements
- Manage up to 35 instruments
- Log data from each instrument
- Plot graphs for Record Date/Number Range, Last Number Recorded, or All Records
- Define sampling parameters
- Communication over RS-232, RS-485, or Wired/Wi-Fi TCP/IP
- Operating system MS Windows™ PC (7, 8.1, 10, and 11)



# Specifications

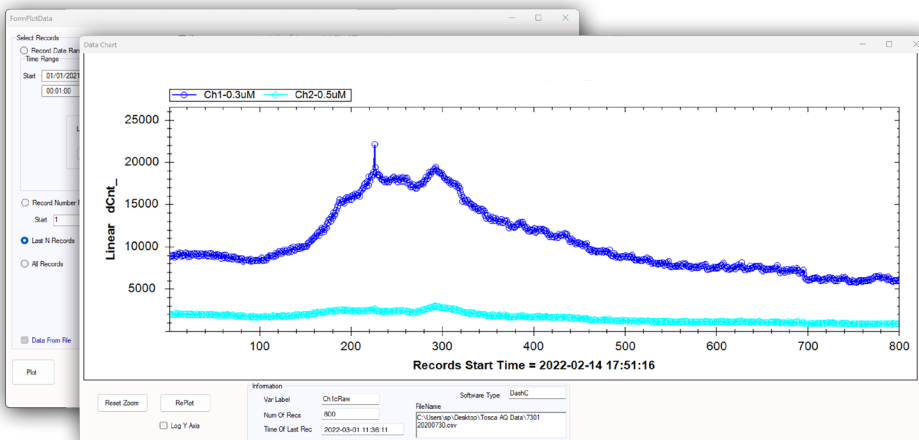
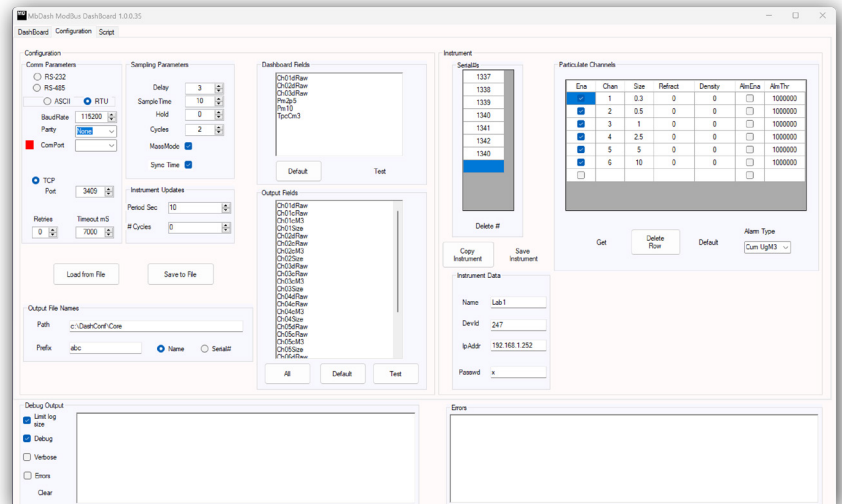


## Dashboard

The ModBus DashBoard allows users to monitor simultaneously up to 35 instruments. The software will display the status and selected data for each instrument. It can also log data from each instrument to a .csv file for archive or analysis.

## Configuration

The software supports ModBus communication over RS-232, RS-485 or TCP (Wired or Wi-Fi), though at present all instruments connected to this software have to share the same connection method. Likewise both Modbus RTU and ASCII modes are supported, though all instruments have to share the same communication mode as well.



## Data Chart

Users can select data fields and a data range for the selected instrument and retrieve that data and plot it for immediate analysis. This provides a quick and simple means of viewing instrument data.

